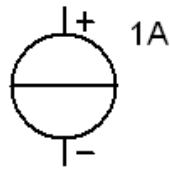
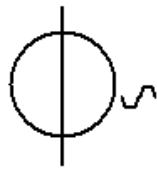


"Gleichspannungsquelle"

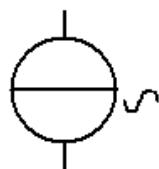


"Gleichstromquelle"



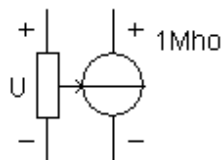
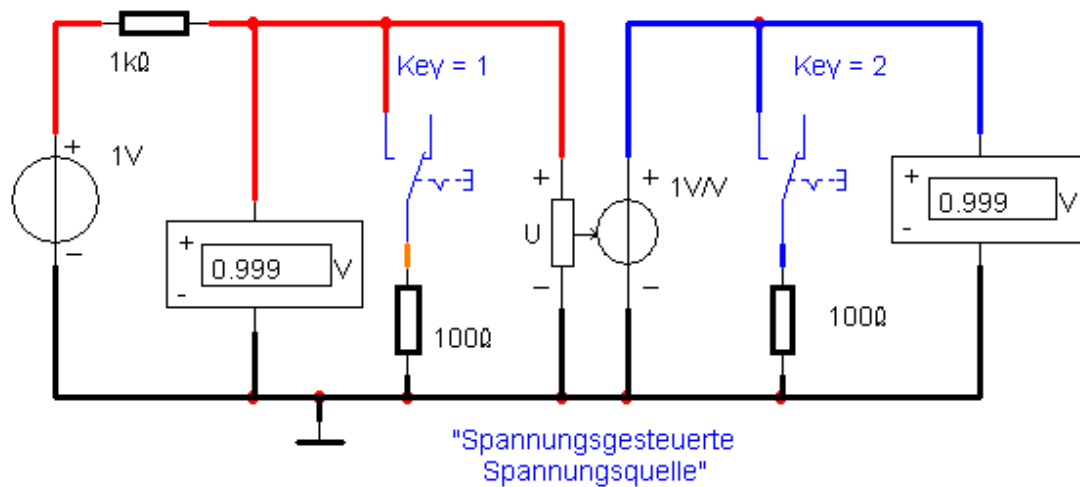
325.269V  
230.00V\_rms  
50Hz  
0Deg

"Wechselspannungsquelle"

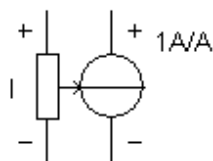


1.41421A  
1.00A\_rms  
1Hz  
0Deg

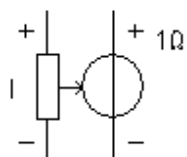
" Wechselstromquelle"



"Spannungsgesteuerte  
Stromquelle"



"Stromgesteuerte  
Stromquelle"



"Stromgesteuerte  
Spannungsquelle"

